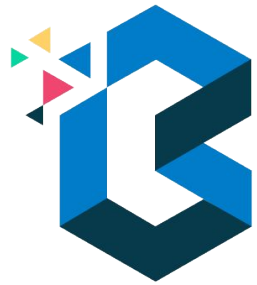


Build to Share

The anatomy of a Build to Share model

Enabling and Promoting
Collaboration
and Innovation.



Build to Share

The anatomy of a Build to Share model

Theresa Cloonan,
Head of IT, Dun Laoghaire Rathdown County Council.

Fergus Healy,
Head of Digital Services, Fingal County Council.



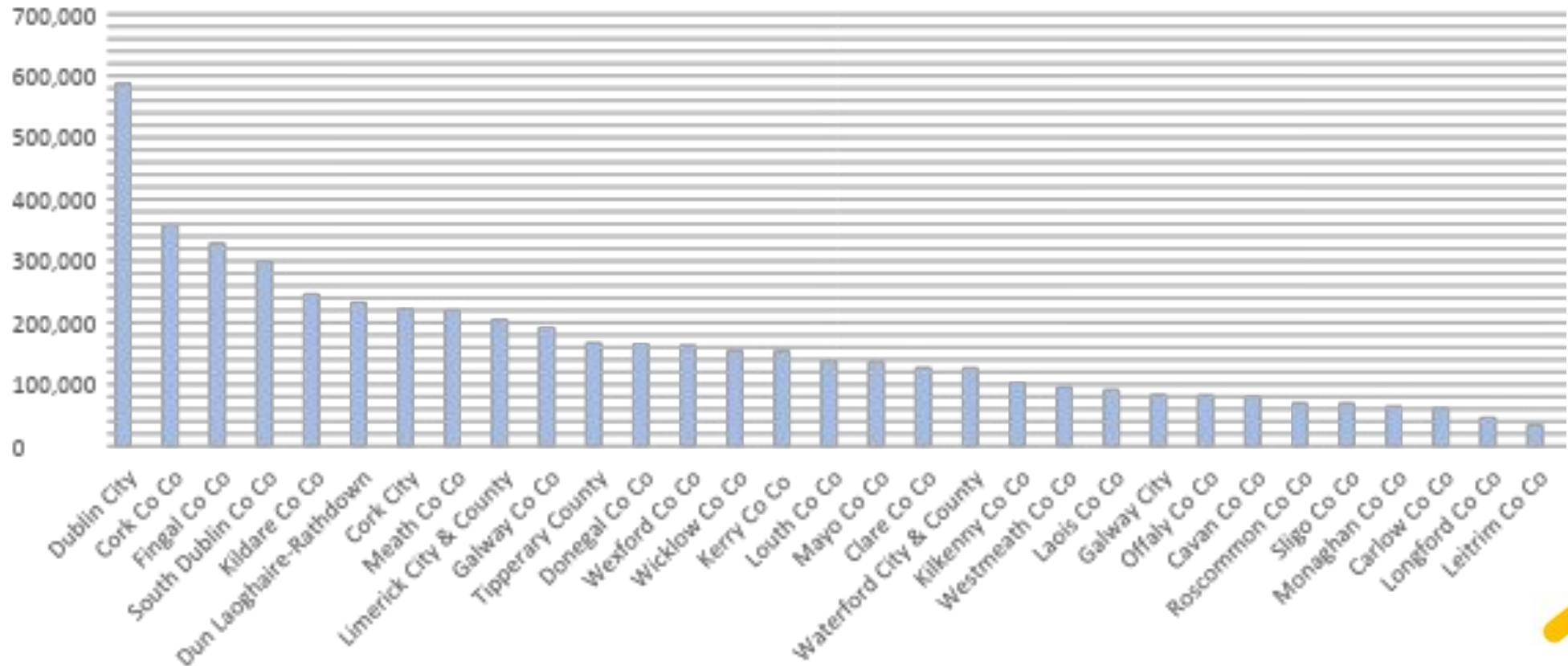
Local Government

- 31 Local Authorities in Ireland serving a population of 5.1 million.
- Each local authority, irrespective of size, has to provide hundreds of services from dog licences to awarding grants for housing adaptations to licencing street furniture.
- Just as the population served by each LA affects the budget, it also impacts on the IT resources available so some LAs have IT departments of 6 people while others have over 50 staff



Local Government

Population per LA Area as per 2022



Digital Transformation

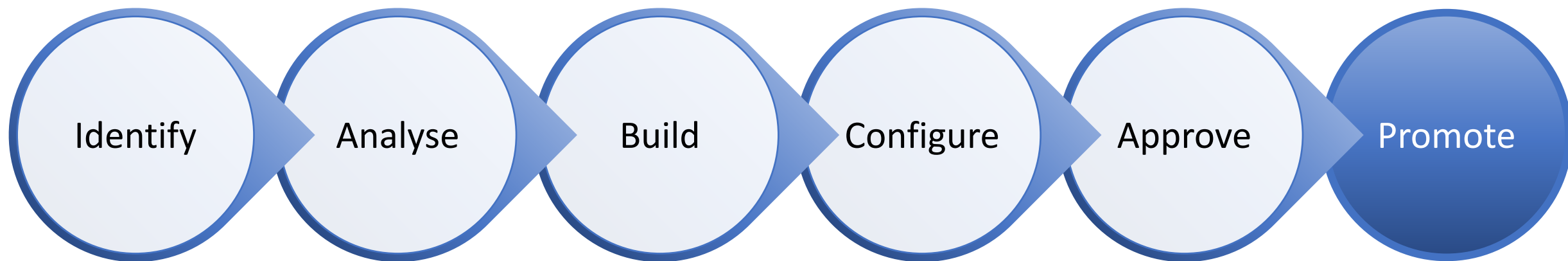
90
%

203
0





Model





Participatio n

- The solution must be live for 3 months.
- Procurement must be in place for a third party to support and enhance the application.
- Security Assessment and DPIA completed.
- Must agree to a shared future of Collaboration, Co funding and Consensus.
- The developing LA charges a licencing fee (based on population size) to recoup its initial investment in developing the solution but it is built to share not profit from





Achievements

Applications available include

- LA Docs
- LA Orders
- Blended Work App
- LA Meeting Point
- Contract Management System
- In the works: ePMDS, Ethics Register, Councillor Apps

Over 12 Local Authorities are now “sharing” applications which were developed by the sector, for the sector in an agile manner and for which they own the IP





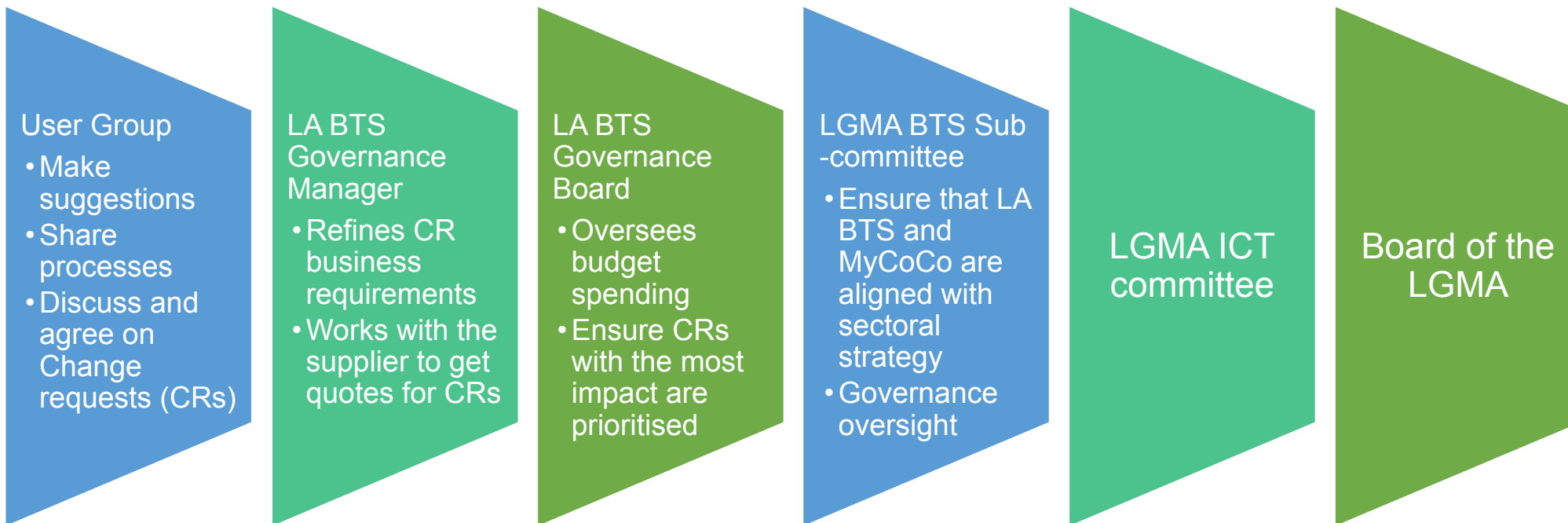
Build to Share

How It Works





Governance





Build to Share

BENEFITS

S





Build to Share

Question s

